



# Certificate of Analysis

QA SAMPLE - INFORMATIONAL ONLY

1 of 3

ICAL ID: 20210114-094  
Sample: CA210114-032-051  
MM, Inc., RSHO Salve, 500mg, PFG-5351, lot-535101  
Strain: MM, Inc., RSHO Salve, 500mg, PFG-5351, lot-535101  
Category: Topical

Batch#:   
Primary Size:   
Batch Size:   
Collected: 01/21/2021; Received: 01/21/2021  
Completed: 01/21/2021

Moisture NT Water Activity NT	$\Delta 9$ -THC ND	CBD 13.01 mg/g	Total Cannabinoids 13.44 mg/g	Total Terpenes NT
--	-----------------------	-------------------	----------------------------------	----------------------

<b>Summary</b>	SOP Used	Date Tested	
Batch			Pass
Cannabinoids	SOP:POT-T006-Topical	01/18/2021	Complete
Heavy Metals	SOP:HM-001	01/15/2021	Pass



## Cannabinoid Profile

Analyte	LOQ	LOD	%	mg/g	Analyte	LOQ	LOD	%	mg/g
THCa	0.03	0.02	ND	ND	CBDV	0.03	0.02	0.008	0.08
$\Delta 9$ -THC	0.03	0.02	ND	ND	CBN	0.03	0.02	ND	ND
$\Delta 8$ -THC	0.03	0.02	ND	ND	CBGa	0.03	0.02	ND	ND
THCV	0.03	0.02	ND	ND	CBG	0.03	0.02	ND	ND
CBDa	0.03	0.02	0.035	0.35	CBC	0.03	0.02	ND	ND
CBD	0.03	0.02	1.301	13.01	<b>Total</b>			<b>1.344</b>	<b>13.44</b>

Total THC=THCa \* 0.877 + d9-THC; Total CBD = CBDa \* 0.877 + CBD; NR= Not Reported, ND= Not Detected, \*Reported by Dry Mass\*; \*analytical instrumentation used Cannabinoids:UHPLC-DAD, Moisture:Mass by Drying, Water Activity:Water Activity Meter, Foreign Material:Microscope\* \*Density tested at a temperature range between 19-24 °C, \*Water Activity tested at a humidity range between 0-90% Relative Humidity. All QA samples are sampled by the client, All California State Compliant samples sampled using SAMPL-SOP-001

## Terpene Profile

Analyte	LOQ	LOD	%	mg/g	Analyte	LOQ	LOD	%	mg/g
---------	-----	-----	---	------	---------	-----	-----	---	------

NR= Not Reported thus no analysis was performed, ND= Not Detected thus the concentration is less then the Limit of Detection (LOD), \*analytical instrumentation used:HS-GC-MS\*



Infinite Chemical Analysis Labs  
8380 Miramar Mall #102  
San Diego, CA  
(858) 623-2740  
www.infiniteCAL.com  
Lic# C8-0000019-LIC

*Josh M Swider*

Josh Swider  
Lab Director, Managing Partner  
01/21/2021

Confident Cannabis  
All Rights Reserved  
support@confidentcannabis.com  
(866) 506-5866  
www.confidentcannabis.com



This product has been tested by Infinite Chemical Analysis, LLC using valid testing methodologies and a quality system as required by state law. All LQC samples were performed and met the prescribed acceptance criteria in 16 CCR section 5730, pursuant to 16 CCR section 5726(e)(13). Values reported relate only to the product tested. Infinite Chemical Analysis, LLC makes no claims as to the efficacy, safety or other risks associated with any detected or non-detected levels of any compounds reported herein. This Certificate shall not be reproduced except in full, without the written approval of Infinite Chemical Analysis, LLC.



# Certificate of Analysis

QA SAMPLE - INFORMATIONAL ONLY

2 of 3

ICAL ID: 20210114-094  
Sample: CA210114-032-051  
MM, Inc., RSHO Salve, 500mg, PFC-5351, lot-535101  
Strain: MM, Inc., RSHO Salve, 500mg, PFC-5351, lot-535101  
Category: Topical

Batch#:   
Primary Size:   
Batch Size:   
Collected: 01/21/2021; Received: 01/21/2021  
Completed: 01/21/2021

## Residual Solvent Analysis

Category 1      LOQ   LOD   Limit   Status   Category 2      LOQ   LOD   Limit   Status   Category 2      LOQ   LOD   Limit   Status

NR= Not Reported thus no analysis was performed, ND= Not Detected thus the concentration is less then the Limit of Detection (LOD) , \*analytical instrumentation used=HS-GC-MS\*

## Heavy Metal Screening

		LOQ	LOD	Limit	Status
	µg/g	µg/g	µg/g	µg/g	
Arsenic	ND	0.048	0.016	1.5	Pass
Cadmium	ND	0.012	0.004	0.5	Pass
Lead	ND	0.011	0.004	0.5	Pass
Mercury	ND	0.033	0.011	3	Pass

NR= Not Reported thus no analysis was performed, ND= Not Detected thus the concentration is less then the Limit of Detection (LOD) , \*analytical instrumentation used:ICP-MS\*

## Microbiological Screening

Result      Status

ND=Not Detected; \*analytical instrumentation used:qPCR\*



Infinite Chemical Analysis Labs  
8380 Miramar Mall #102  
San Diego, CA  
(858) 623-2740  
www.infiniteCAL.com  
Lic# C8-0000019-LIC

*Josh M Swider*

Josh Swider  
Lab Director, Managing Partner  
01/21/2021

Confident Cannabis  
All Rights Reserved  
support@confidentcannabis.com  
(866) 506-5866  
www.confidentcannabis.com



This product has been tested by Infinite Chemical Analysis, LLC using valid testing methodologies and a quality system as required by state law. All LQC samples were performed and met the prescribed acceptance criteria in 16 CCR section 5730, pursuant to 16 CCR section 5726(e)(13). Values reported relate only to the product tested. Infinite Chemical Analysis, LLC makes no claims as to the efficacy, safety or other risks associated with any detected or non-detected levels of any compounds reported herein. This Certificate shall not be reproduced except in full, without the written approval of Infinite Chemical Analysis, LLC.



# Certificate of Analysis

QA SAMPLE - INFORMATIONAL ONLY

3 of 3

ICAL ID: 20210114-094  
Sample: CA210114-032-051  
MM, Inc., RSHO Salve, 500mg, PFC-5351, lot-535101  
Strain: MM, Inc., RSHO Salve, 500mg, PFC-5351, lot-535101  
Category: Topical

Batch#: \_\_\_\_\_  
Primary Size: \_\_\_\_\_  
Batch Size: \_\_\_\_\_  
Collected: 01/21/2021; Received: 01/21/2021  
Completed: 01/21/2021

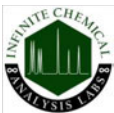
## Chemical Residue Screening

Category 1	LOQ	LOD	Status	Mycotoxins	LOQ	LOD	Limit	Status
------------	-----	-----	--------	------------	-----	-----	-------	--------

Category 2	LOQ	LOD	Limit	Status	Category 2	LOQ	LOD	Limit	Status
------------	-----	-----	-------	--------	------------	-----	-----	-------	--------

### Unknown Analyte(s):

NR= Not Reported thus no analysis was performed, ND= Not Detected thus the concentration is less then the Limit of Detection (LOD) , \*analytical instrumentation used:LC-MSMS & GC-MSMS\*



Infinite Chemical Analysis Labs  
8380 Miramar Mall #102  
San Diego, CA  
(858) 623-2740  
www.infiniteCAL.com  
Lic# C8-0000019-LIC

*Josh M Swider*

Josh Swider  
Lab Director, Managing Partner  
01/21/2021

Confident Cannabis  
All Rights Reserved  
support@confidentcannabis.com  
(866) 506-5866  
www.confidentcannabis.com



This product has been tested by Infinite Chemical Analysis, LLC using valid testing methodologies and a quality system as required by state law. All LQC samples were performed and met the prescribed acceptance criteria in 16 CCR section 5730, pursuant to 16 CCR section 5726(e)(13). Values reported relate only to the product tested. Infinite Chemical Analysis, LLC makes no claims as to the efficacy, safety or other risks associated with any detected or non-detected levels of any compounds reported herein. This Certificate shall not be reproduced except in full, without the written approval of Infinite Chemical Analysis, LLC.